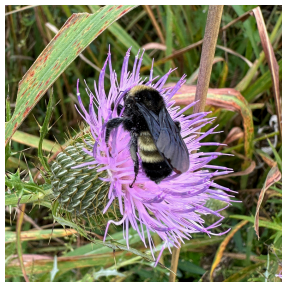



5 COMMON TYPES OF NATIVE BEES

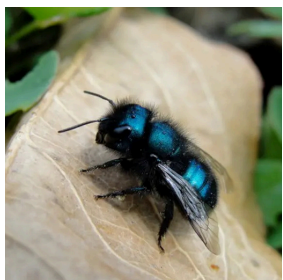
of North America



Bumble Bees (*Bombus spp.*)

- Size: Large (0.5–1 inch), chunky
- Color: Black and yellow, very fuzzy
- Behavior: Slow, loud, heavy fliers; visit many flowers
- Nesting: Underground burrows or dense vegetation

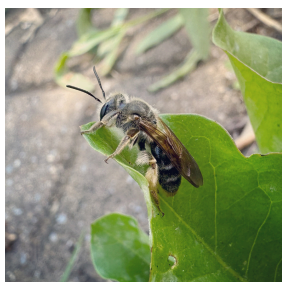
 **How to Tell:** Big, fluffy, and slow = bumble bee.



Mason Bees (*Osmia spp.*)


- Size: Small to medium (0.3–0.6 inches)
- Color: Metallic blue, green, or black
- Behavior: Solitary; looks for holes in wood or stems
- Nesting: Seals nest chambers with mud in holes or bee hotels

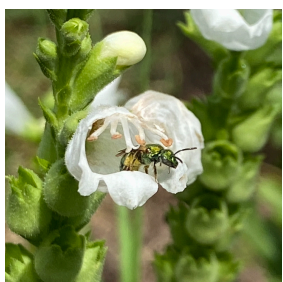
 **How to Tell:** Shiny and nesting in holes? That's a mason bee..



Leafcutter Bees (*Megachile spp.*)


- Size: Medium (0.3–0.7 inches)
- Color: Dark brown or black, pale bands
- Behavior: Carries pollen under belly, not legs
- Nesting: Lines nests with neat leaf circles

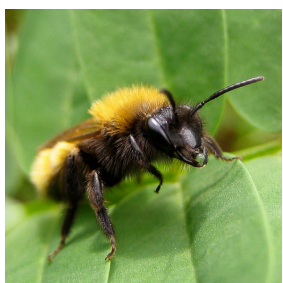
 **How to Tell:** Look for round cutouts in leaves and bees with belly pollen..



Sweat Bees (*Halictidae family*)


- Size: Small (0.2–0.5 inches)
- Color: Metallic green, blue, or dull black
- Behavior: Fast, shiny; may land on sweaty skin
- Nesting: Bare soil burrows, often communal

 **How to Tell:** Tiny, shiny, and curious about your sweat? It's a sweat bee! .



Mining Bees (*Andrena spp.*)

- Size: Small to medium (0.3–0.6 inches)
- Color: Fuzzy brown, black, or tan
- Behavior: Solitary, active in early spring, digs into ground
- Nesting: Sandy or loose soil burrows

 **How to Tell:** Ground-digging, fuzzy spring bees = mining bees.